

Guideline: Referral, Transfer and Discharge in the National Burn Centre

Purpose

To provide guidelines for which patients should be referred to the National Burn Centre (NBC) from other regions.

To outline the process for referring patients to the National Burn Centre.

To outline the process for transferring patients from the National Burn Centre to Regional Services.

Responsibility

- Medical personnel from local hospitals.
- Regional plastic surgeons.
- National Burn Centre surgeons.
- Burn clinical nurse specialists.

Document ID:	A10404	CMH Revision No:	12.0
Service:	National Burns Centre	Last Review Date :	6/12/2021
Document Owner:	Clinical Head - Plastic Burns	Next Review Date:	6/12/2024
Approved by:	National Burn Centre Review Committee	Date First Issued:	3/06/2009
<i>If you are not reading this document directly from the Document Directory this may not be the most current version.</i>			



New Zealand National Burn Service

Referral to National Burn Centre

1. Complete referral form
<http://www.nationalburnservice.co.nz/pdf/referralform.pdf>
2. Scan & email referral and photographs
(oncallburnsnurse@middlemore.co.nz)
3. Phone On Call Burn Coordinator (09 250 3800) to confirm receipt of referral
4. On Call Burn Coordinator will phone back and coordinate communication between referring team and the NBC

On Call Burn Coordinator: 09 250 3800
Email: oncallburnsnurse@middlemore.co.nz



Referral Criteria for National Burn Centre

- Burns greater 30% total body surface area
- Full thickness burns to face, hands, feet, genitalia, perineum
- Burn injury with significant inhalation injury
- High voltage electrical burns
- Significant chemical burns

www.nationalburnservice.co.nz



NBC poster: May 2021

Document ID:	A10404	CMH Revision No:	12.0
Service:	National Burns Centre	Last Review Date :	6/12/2021
Document Owner:	Clinical Head - Plastic Burns	Next Review Date:	6/12/2024
Approved by:	National Burn Centre Review Committee	Date First Issued:	3/06/2009

If you are not reading this document directly from the Document Directory this may not be the most current version.

The following criteria indicate discussion and/or transfer to the NBC:

(NB. Referral does not necessarily mean transfer.)

- Burns greater 30% total body surface area
- Full thickness burns to face, hands, feet, genitalia, perineum
- Burn injury with significant inhalation injury
- High voltage electrical burns
- Significant chemical burns

All patients that fulfil these criteria are required to be discussed with the NBC [but may not necessarily be transferred if this is agreed by the RBU and the NBC staff]. Regardless of whether the patient is transferred or not, a referral form **must** be sent to the National Burn Centre to confirm the agreed outcome.

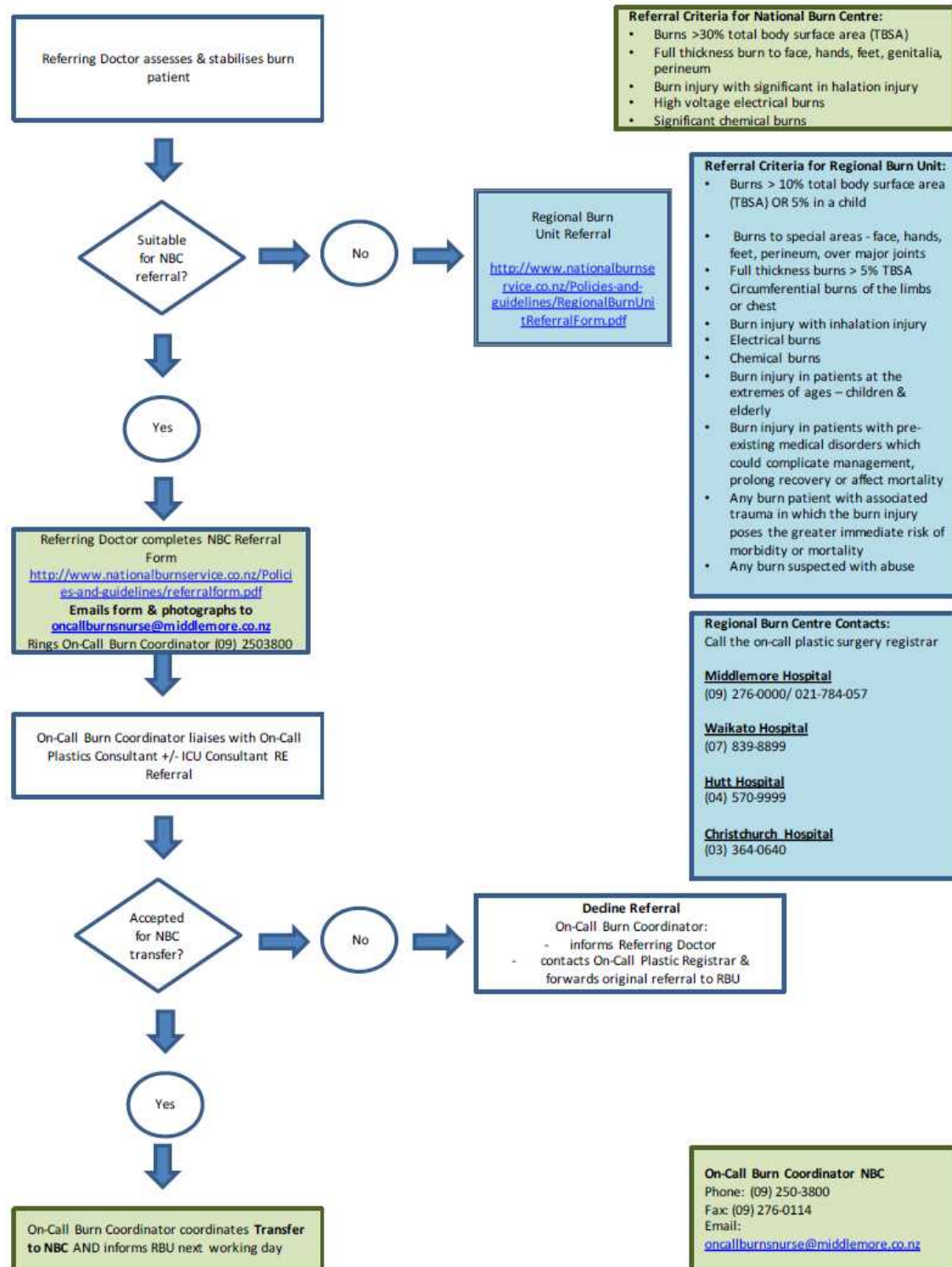
Any patient who fulfils the criteria for admission in a RBU (ANZBA criteria, see below) **may** be discussed (at the discretion of the referring plastic surgeon) with the NBC if it is felt that the patient's care would benefit from transfer [although transfer is not necessarily guaranteed].

Complex Burn Injury – ANZBA Criteria

- Burns >10% Total Body Surface Area (TBSA) or 5% in a child
- Burns of Special Areas, i.e. face, hands, feet, perineum and major joints.
- Full thickness burns >5% TBSA.
- Electrical burns.
- Chemical burns.
- Burns with associated inhalation injury.
- Circumferential burns of the limbs or chest.
- Burns at the extremes of age, i.e. children and elderly.
- Non-accidental burn injury
- Burn injury in patients with pre-existing medical disorders which could complicate management, prolong recovery or effect mortality.
- Any burn patient with associated trauma.

Document ID:	A10404	CMH Revision No:	12.0
Service:	National Burns Centre	Last Review Date :	6/12/2021
Document Owner:	Clinical Head - Plastic Burns	Next Review Date:	6/12/2024
Approved by:	National Burn Centre Review Committee	Date First Issued:	3/06/2009
<i>If you are not reading this document directly from the Document Directory this may not be the most current version.</i>			

Referral, Transfer and Discharge in the National Burn Centre



<http://www.nationalburnservice.co.nz/Policiesandguidelines/RegionalBurnUnitReferralForm.pdf>

oncallburnsnurse@middlemore.co.nz

Document ID:	A10404	CMH Revision No:	12.0
Service:	National Burns Centre	Last Review Date :	6/12/2021
Document Owner:	Clinical Head - Plastic Burns	Next Review Date:	6/12/2024
Approved by:	National Burn Centre Review Committee	Date First Issued:	3/06/2009

If you are not reading this document directly from the Document Directory this may not be the most current version.

Transfer of Care from the National Burn Centre

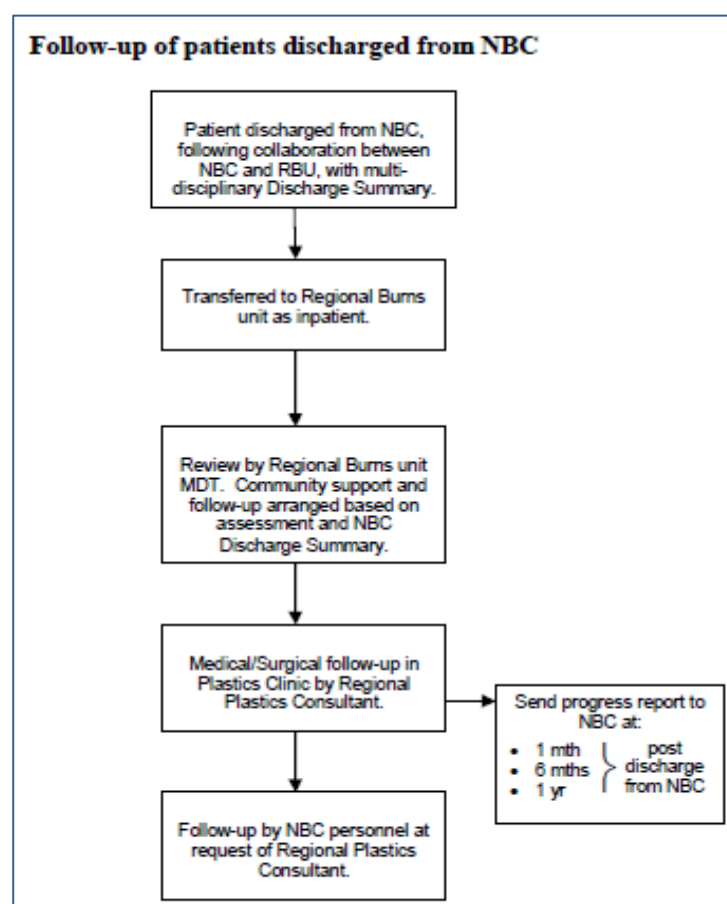
Once the patient is discharged from the NBC, responsibility for ongoing care lies with the Regional Burn Unit. The consultant responsible will be the original referring consultant or the on call Plastics consultant, at the Regional Burn Unit, on the day of referral, unless notified otherwise by the Regional Burn Unit.

Patients will be transferred as inpatients from the NBC to the appropriate Regional Burn Unit to enable regional personnel to arrange local support services and plan follow-up care. Exceptions can be made in collaboration between the NBC and the RBU for a patient to be discharged directly home, OR to a local hospital, if this is believed to be safe and appropriate for the patient and family.

Patients will be discharged from the NBC under the following guidelines:

- After acute surgical treatment has been completed.
- When NBC personnel consider the patient is ready for return transfer, following comprehensive multi-disciplinary discharge planning.
- After discussion with and acceptance by both the Regional Plastic Surgeon and Charge Nurse of the receiving unit.

Comprehensive discharge summaries and plans will be sent to the receiving unit, in line with the Multidisciplinary Electronic Discharge Summary and Burn Patients Progress Report Guidelines.



Document ID:	A10404	CMH Revision No:	12.0
Service:	National Burns Centre	Last Review Date :	6/12/2021
Document Owner:	Clinical Head - Plastic Burns	Next Review Date:	6/12/2024
Approved by:	National Burn Centre Review Committee	Date First Issued:	3/06/2009
<i>If you are not reading this document directly from the Document Directory this may not be the most current version.</i>			

Referral, Transfer and Discharge in the National Burn Centre

Definitions

Terms and abbreviations used in this document are described below:

Term/Abbreviation	Description
TBSA	Total Body Surface Area
MDT	Multi-Disciplinary Team
NBC	National Burn Centre
RBU	Regional Burn Unit
MMH	Middlemore Hospital

Associated Documents

Other documents relevant to this guideline are listed below:

NZ Legislation	Privacy Act Health Information Privacy Code Health and Disability Code of Consumers Rights Health and Disability Services (Safety) Act, 2001. Health Practitioners Competency Assurance Act
CM Health Clinical Board Policies	Documentation in the Clinical Record Procedure Use of Abbreviations in the Clinical Record Policy Safe Management and Privacy of Personal Health Information
NZ Standards	Health and Disability Services Standards, NZS 8134:2008.
Organisational Procedures or Policies	Burn Patients Progress Reports– Guideline. Multidisciplinary Electronic Discharge Summary – Guideline NBC Referral Procedure
Other related documents	National Burn Service Framework Tahiti Burns Contract

Document ID:	A10404	CMH Revision No:	12.0
Service:	National Burns Centre	Last Review Date :	6/12/2021
Document Owner:	Clinical Head - Plastic Burns	Next Review Date:	6/12/2024
Approved by:	National Burn Centre Review Committee	Date First Issued:	3/06/2009
<i>If you are not reading this document directly from the <u>Document Directory</u> this may not be the most current version.</i>			